

Appropriating a 450 hector equatorial ocean-front agriculturally damaged site for human settlement

Holistic designing for resilience

- Learning from successful precedents – local and borrowed
- Using postmodern principles to ensure restrained oversteering
- Designing settlements to take root and grow naturally
- Integrating passive and new ecological technologies
- Promoting safety through passive design and technology
- Using common sense cost effective building techniques
- Incorporating sustainable materials that age with grace

- Adding value to the region
- Providing for a diversity of people to enjoy life
- Valuing the climate and site assets and repairing weaknesses
- Promoting vibrant walkable neighborhood life
- Offering residential density for privacy, safety, and indoor/outdoor living

Common sense designing for people

- Live/work neighborhoods with jobs
- Neighborhoods with mixed use centers and residential variety
- Agricultural land for commercial and private farming
- An inlet harbor to promote marine activities and business
- Designing for healthy indoor and outdoor living



Neighborhood patterns

- Densely compact organic streets, courts and squares
- Priority to pedestrians and bicycles
- Public streets with front doors to private homes and private alleys to parking and service
- Public areas filled with trees and flowering plants, subtle lighting, ornamental urban furniture
- Meaningful vistas for a sense of orientation and to encourage walkability
- Maximum building setbacks for well-defined street
- Promoting a sense of place, connectivity, and security

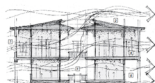
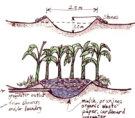


Design features

- Legible and covered pedestrian paths, wide and permeable outdoor living, and engagement with the public realm below
- Shades for shade, ventilation, privacy and security
- Tall walls, screens and air vents maximize heat control
- Meat roofs with large overhang protecting from the sun
- Robust and strategic for shaded outdoor living
- Decorative patterns and color inspired by local heritage adding characterfulness personality to streets and outdoor

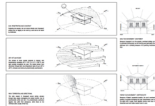


Learning from successful local and borrowed patterns ~ new and old ~ to create livable lovable places for people



Building designs

- Designing for modern living and identity of place
- Adopting successful traditional local and borrowed patterns
- Integrating contemporary ecological techniques
- Side yards/terraces are designed to maximize family privacy, security and healthy outdoor living
- Houses front on streets and back on private alleys
- Apartments all access directly from outdoor spaces and offer terraces and loggias to enjoy outdoor living
- All houses collect the natural climate for healthy indoor and outdoor living
- Variety of character for different places
- More vernacular human scale patterns for houses
- Playful wider classical proportions and designs for mixed use buildings and village centers



Site works and infrastructure

- Based on postmodern principles and borrowed techniques such as shade and outdoor plans
- Use of light color materials for roads to minimize heat absorption
- Recycling of water and material

